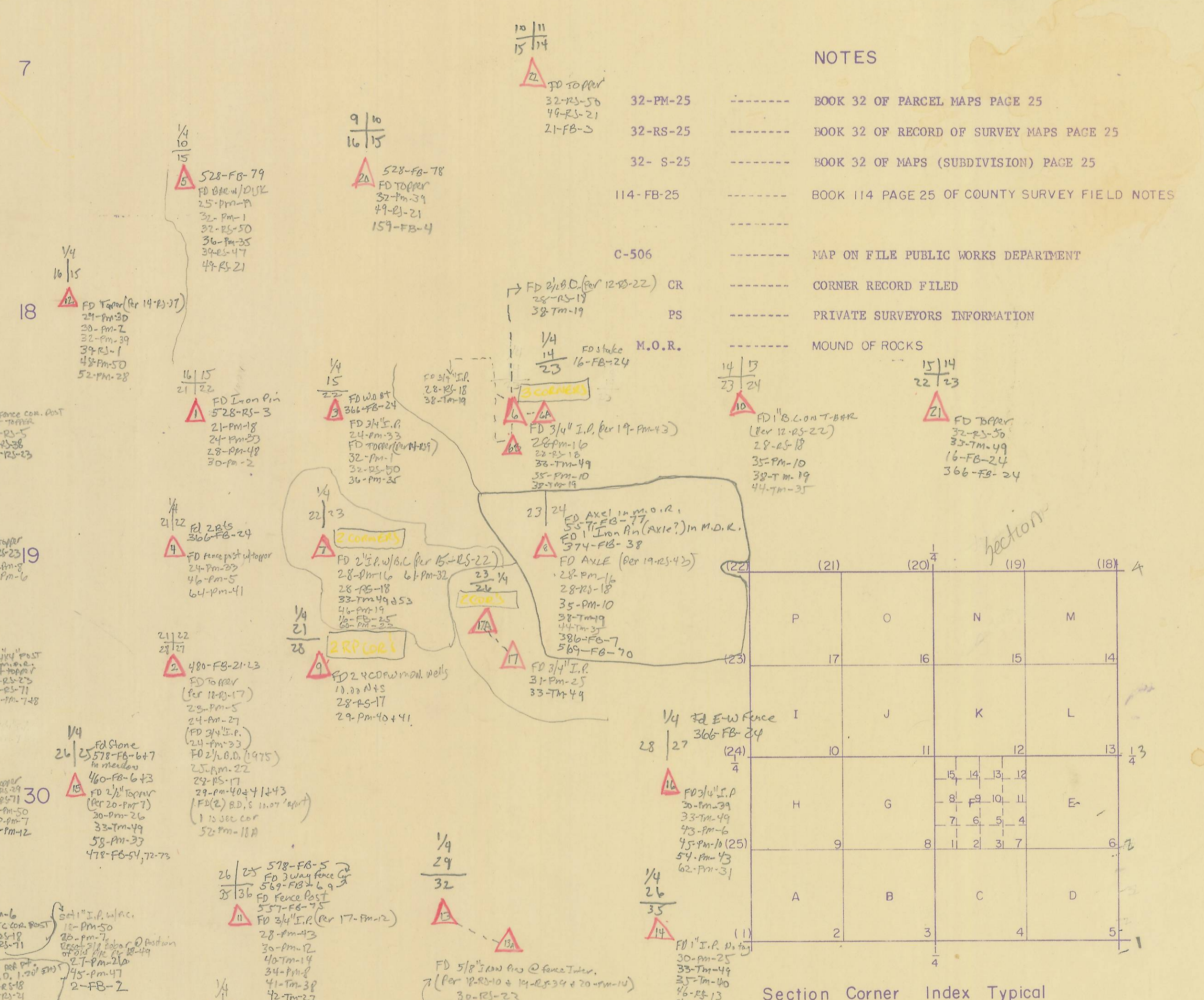
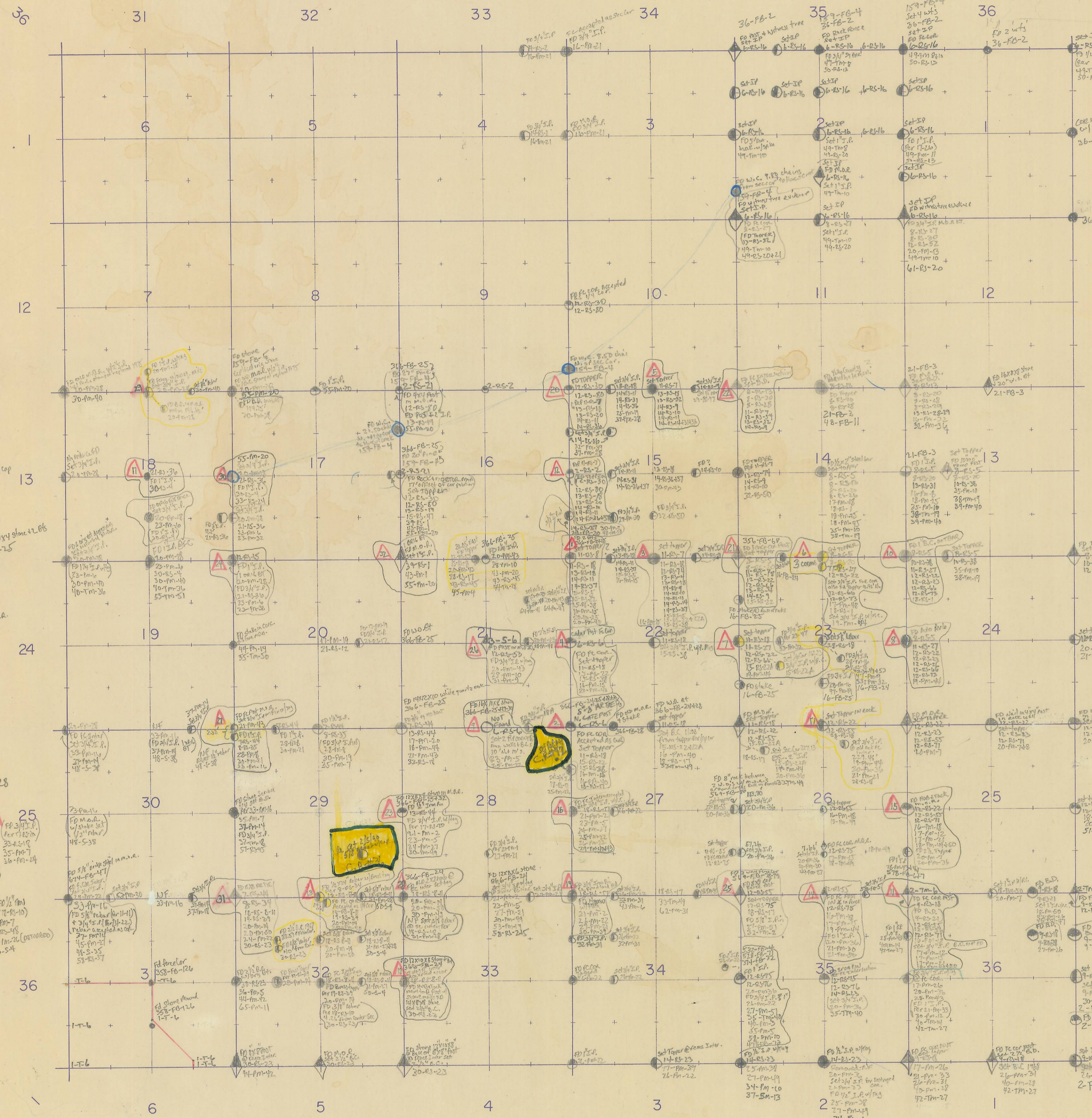


LEGEND

- ◇----- ORIGINAL GOVERNMENT CORNER SEARCHED FOR - NOT FOUND
- ◆----- ORIGINAL GOVERNMENT CORNER FOUND
- ◆----- FOREST SERVICE CORNER
- ◆----- STANDARD B.L.M. CORNER
- ◆----- STANDARD D.W.R. CORNER
- ◆----- STANDARD BUTTE CORNER - 2" IRON PIPE AND BRASS CAP
- CORNER MONUMENT - NO HISTORY - SHOWN ON RECORD MAP
- CORNER MONUMENT - NO HISTORY
- ORIGINAL CORNER MONUMENT - SHOWN ON RECORD MAP
- PROPORTIONED CORNER SET BY SURVEYOR - SHOWN ON RECORD MAP
- CORNER MONUMENT SET BY SURVEYOR - NOT SHOWN ON RECORD MAP
- CORNER SEARCHED FOR NOT FOUND - DATE OF SEARCH

NOTES

- BOOK 32 OF PARCEL MAPS PAGE 25
- BOOK 32 OF RECORD OF SURVEY MAPS PAGE 25
- BOOK 32 OF MAPS (SUBDIVISION) PAGE 25
- BOOK 114 PAGE 25 OF COUNTY SURVEY FIELD NOTES
- MAP ON FILE PUBLIC WORKS DEPARTMENT
- CORNER RECORD FILED
- PRIVATE SURVEYORS INFORMATION
- MOUND OF ROCKS



Section Corner Index Typical  
 (1) - Special case  
 EXAMPLE:  
 18-3 = South 1/4 corner of Section 18  
 18-F-9 = Center of NW 1/4 of SE 1/4 of Section 18

**COUNTY OF YUBA**  
 DEPARTMENT OF PUBLIC WORKS  
 MARYSVILLE CALIFORNIA

Section Corner Monumentation  
 T. 17 N. - R. 5 E. - M.D.B. # M.

DWN. BY	DATE	PROJECT NUMBER
CHK. BY	DATE	
F.B.	SCALE 1" = 200'	

Date of last entry